

Maritime Logistics in PNG

‘Expect the Unexpected’

Peter van Duyn

Netherlands Chamber of Commerce Australia

24th May 2012

Assignment overview

- Assigned by ABV to be based in Port Moresby and work with PNG Ports Corporation for 2 months with a possible follow up later this year
- Initially to assist in customising the ILO Port worker development program in conjunction with the HR Learning and Development section
- Assisted Maritime Compliance Division in setting up a secondment program with VRCA and PoMC
- Provided strategic advice



Australian Business Volunteers

- Recruits and places *business volunteers* with businesses and enterprises in the Pacific and SE Asia, to assist with training, transfer of skills, and capacity building
- AusAid funded,
- Inception 1981,
- 1000 volunteers
- www.abv.org.au



Our accommodation in Port Moresby



24/7 Security



Accommodation in the bush



Map of PNG



Country Overview

- PNG has approx 6 million people (last census 2000) of which 40 % is under the age of 15
- 500,000 square km, GDP K 20 Billion , GDP growth >7% p.a
- Central mountain range down the middle with highest mountain Mt Wilhelm 4500 m
- History; pre WWI/WW2/Independence
- Resources driven economy
- Fledgling tourism industry



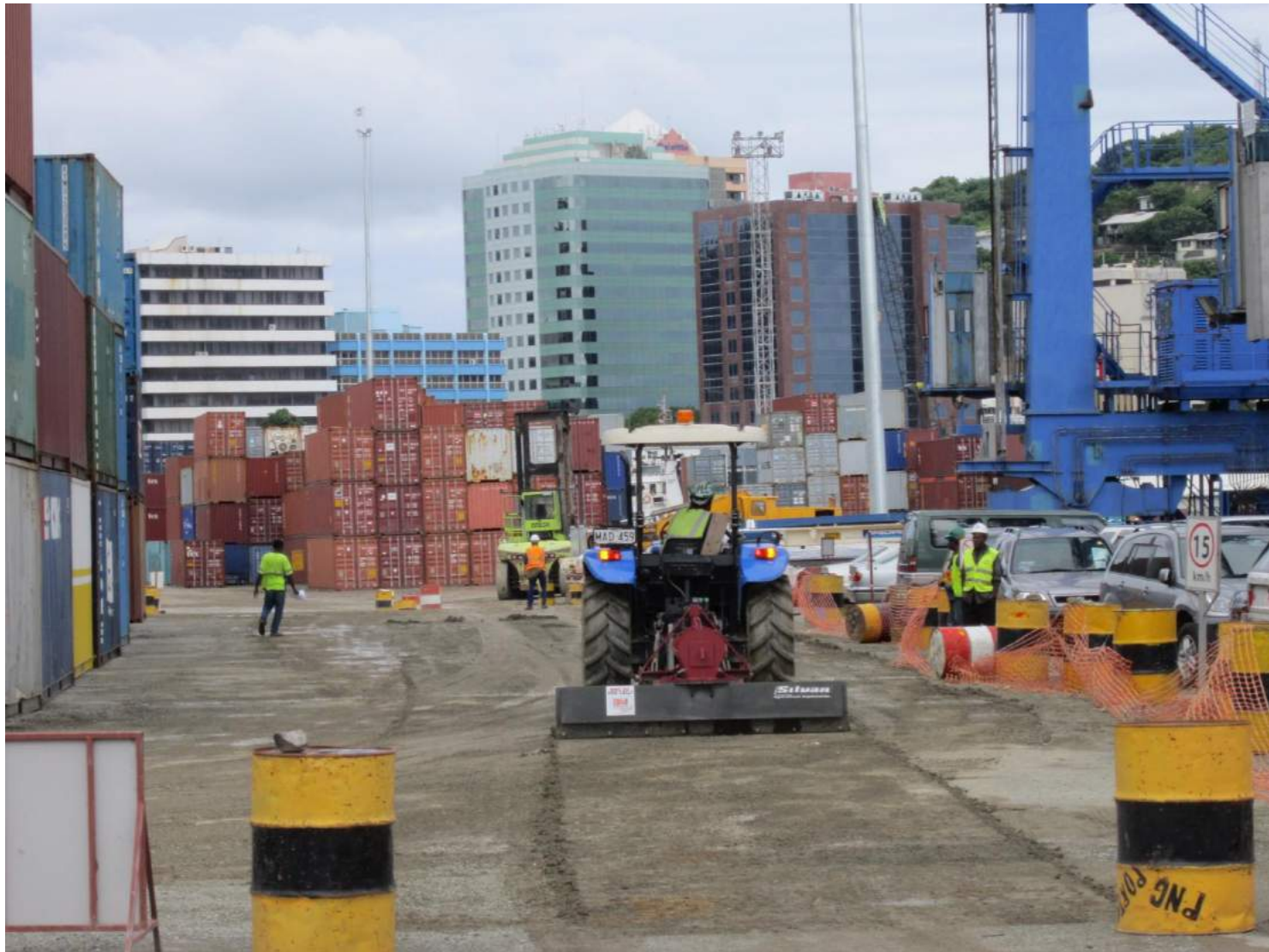
Port Information @ PNG Ports Corporation

Port Moresby

- Capital of PNG , 2nd largest port
- 3 Main wharves run by PNG Ports
- A number of international/coastal/private wharves
- Curtain Bros has a number of private facilities inclusive of ship repair
- Private berth being constructed in Caution Bay (20 Km N of PoM) for LNG project















Lae

- Largest port and handles 60 % of PNG total cargo throughput
- 3 berths
- International/coastal/private wharves
- Congestion issues
- Services construction projects in Highlands
- ADB funded wharf development







Challenges

- Infrastructure road/air/sea
- How to manage natural resources fuelled growth (GDP>7%)
- How to manage people's expectations
- Political instability
- Health issues; HIV/Aids, domestic violence
- Security issues adding 5 % to cost of doing business



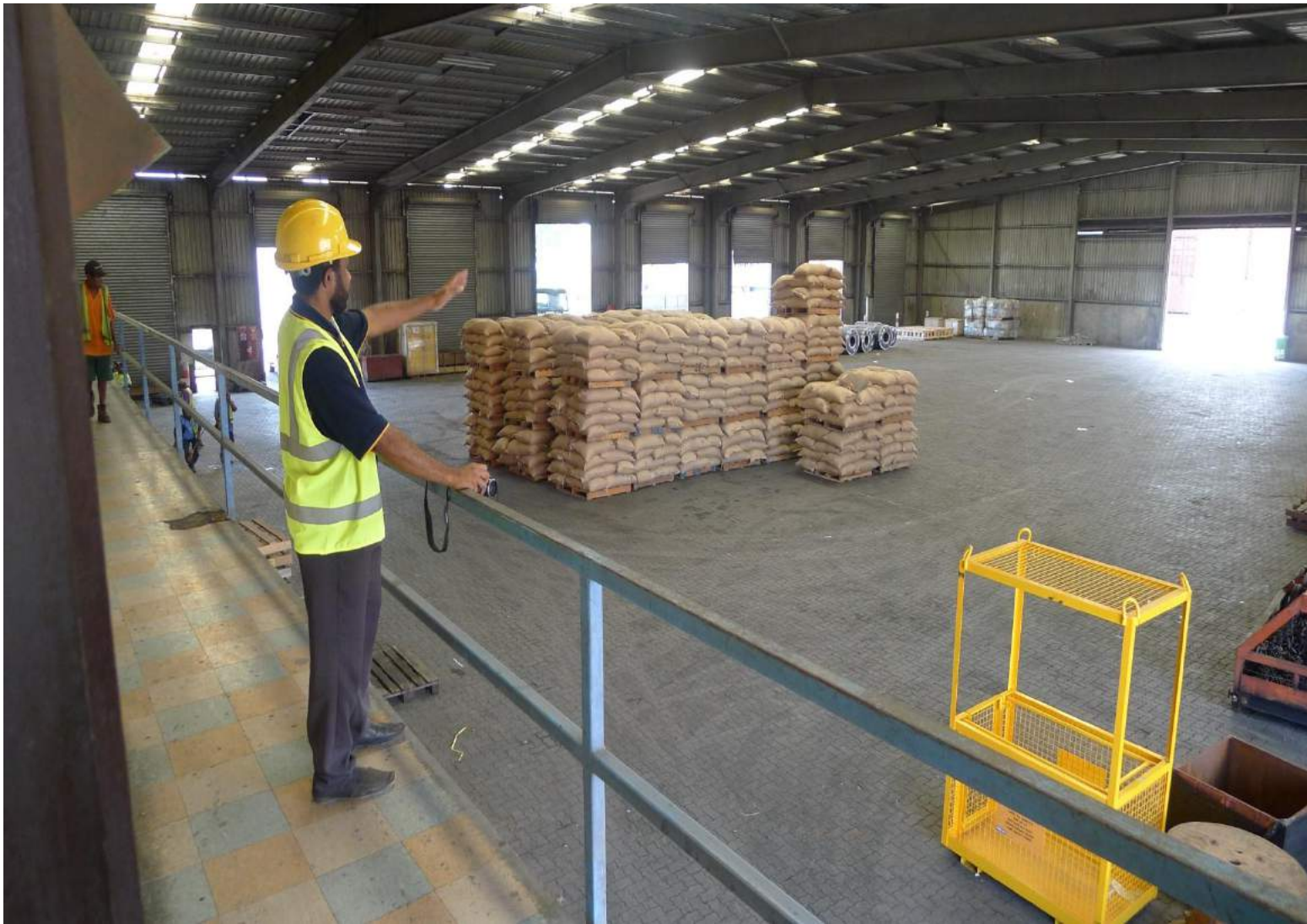


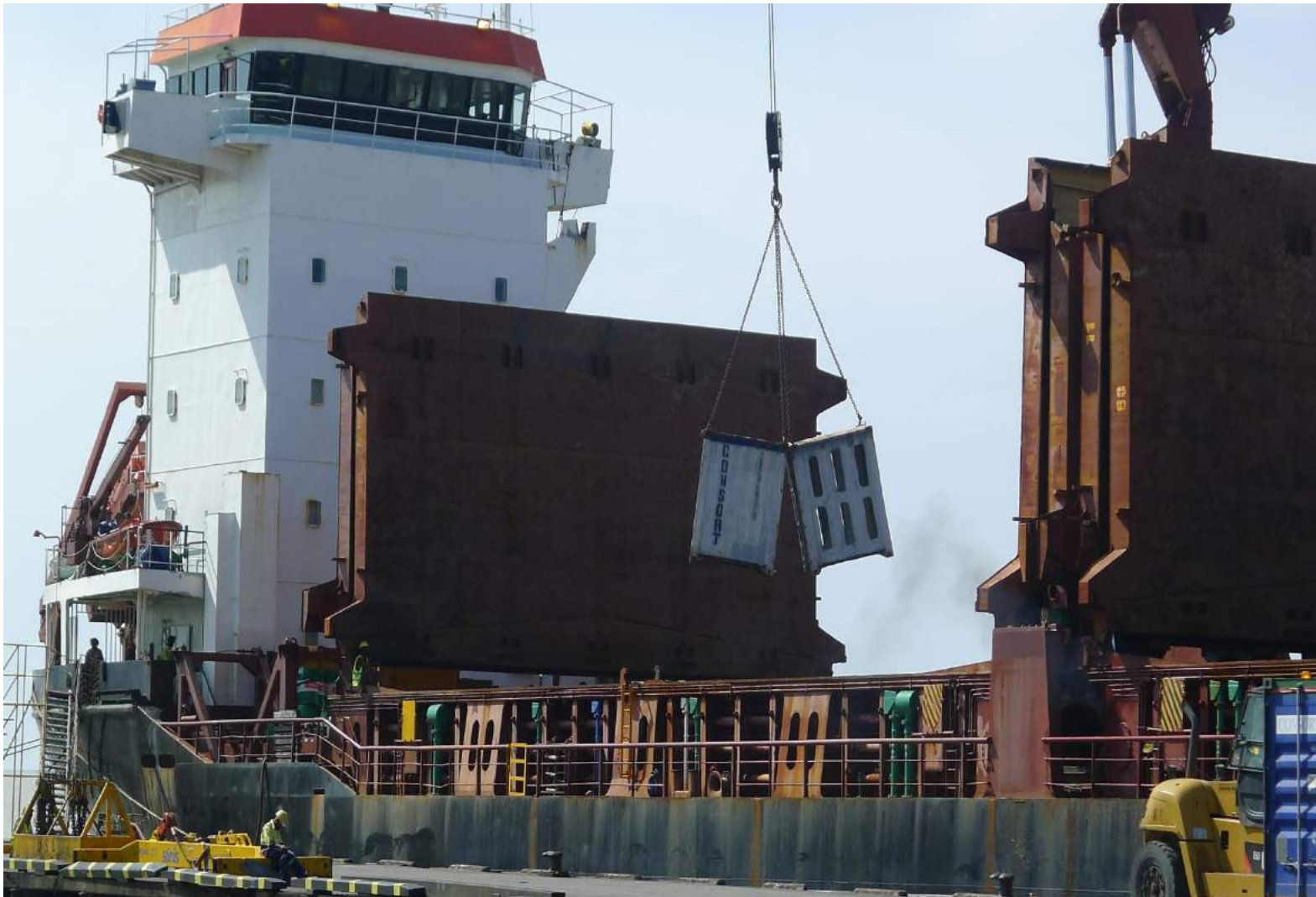




















Supply Chains

Three examples:

- Copra (dried and smoked coconut)/Coconut oil
- Palm oil
- Tuna canned/frozen



















Tenk Yu Tru

